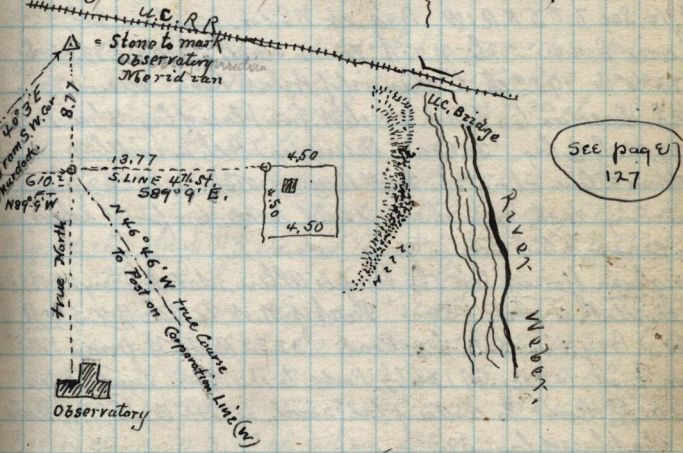


Copy of deed from Henry Hadder & wife to W^m F. Smith dated April 23-1888 - Recorded in book V-page 514
 Beg. 13.77 ch. at E. from the intersection of S. line 4th Str. with U.S. Observatory Meridian - Thence E 4.50 ch. to cor. Leroy Street S. along west side of said St. 4.50 ch. to cor. Leroy Str. & Washington Ave. W 4.50 ch. to cor. W. st. & Maple Ave. N. along E. side Maple Str. 4.50 ch. to beg. 2 1/4 a.



Copy - deed from John C. Gilmore to Jacob Phillips dated June 9-1888 - Part of Lots 9-10 - Block 56 Plat "A" O-S-S - Beg. 15 Rods S. from N.E. cor. said Block W. 16 Rods S. 5 Rods E. 16 Rods N. 5 Rods to Beg. - surveyed Aug 4-1888 - Recorded X-223.

Deed - John D. Malan to Maria Louisa Malan - July 21-1882 Book T-337 - Lots 7-9 - Block 7 - Plat B - O-C-S - excepting 4 Rods on the west side, by 16 long, owned by Nathomas Malan - surveyed Aug 4-1888

Copy of deed from Edmund Robins to Ann Robins, dated Feb. 27-1886 - Recorded, Book U - page 43 - Part of S. W 1/4 Sec. 30 T 6 N R 2 W Beg. S.E. cor. said 1/4 Sec. N-40. ch W. 6.52 ch S 40. ch, E. 6.52 ch to beg. 26 1/2 a, deed mad out by self.